

Te Hapū o Ngāti Wheke Incorporated Rūnanga Meeting

Sunday 20 November 2022 10am

At Rāpaki Marae

<https://zoom.us/j/98263737354?pwd=bmcwWFJLOE9wck1mK0RqREpFYUtWUT09>

Passcode: 391464

1. Karakia Timataka
2. Ngā Mate
3. Apologies
4. REPORTS
 - 4.1. Chairperson Report
 - 4.2. TRONT Rep Report
 - 4.3. Financial Report
5. Confirmation of October 2022 Rūnanga Minutes
6. General Business
7. Karakia Whakamutuka

Manuhiri: Following completion of the meeting (proposed 12.15) there will be a short mihiwhakatau to welcome the team working with Jeni Leigh Walker on the Taonga Tuku Iho documentary prior to lunch at 12.30

1pm - Launch of the documentary followed by overview of the new website.

Te Hapū o Ngāti Wheke Chair Report November 2022

I wish to firstly acknowledge the many whānau who have recently lost loved ones. It has been a difficult time with so many passing in a short time, and we cherish their memories and continue to support each other.

As always there is a lot happening here at Rāpaki and around our rohe and many of those things are outlined in this report. Thanks to all those who have contributed to improving opportunities for our whānau and local communities, whether through committees, on the marae, or elsewhere. As always we depend on the efforts of whānau to make things happen.

The Quarterly Report from the Office (Appendix 1 to this report) summarises what has happened of late primarily in the 3 months ending 30 September 2022. We are still working as to how best to format and populate this report to inform whānau as to all the mahi being done, so all feedback welcome.

Pūrau

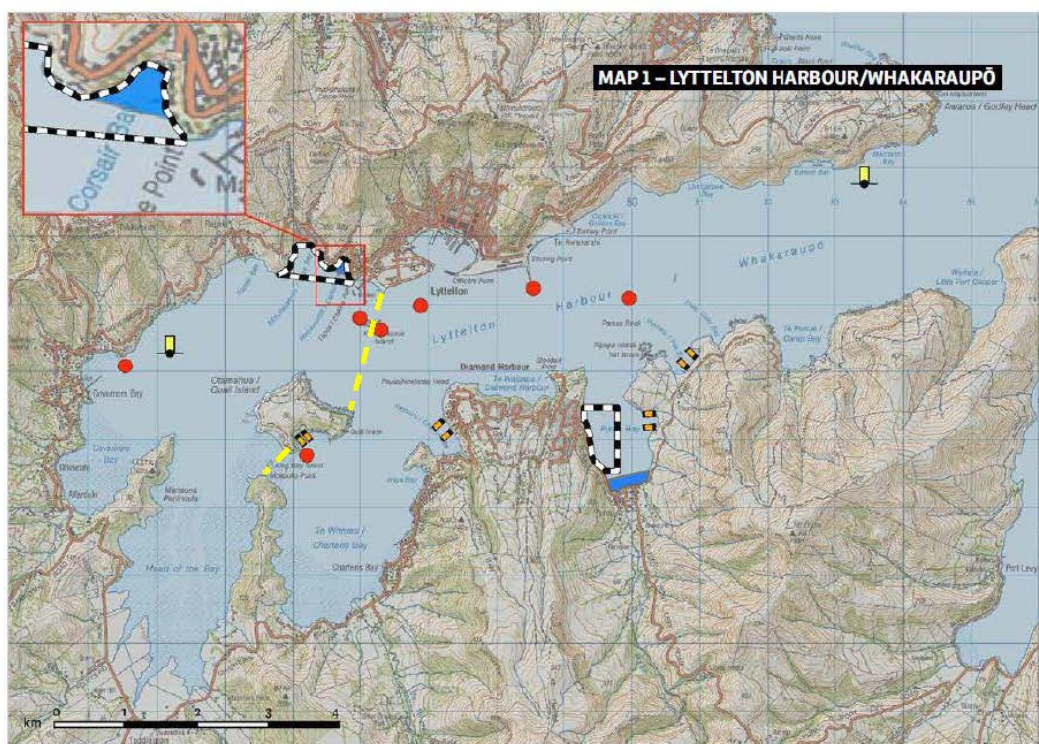
Exec recently met with TRONT Te Ao Tūroa representatives who have offered to assist with the process of reclaiming ownership of the Pūrau Reserve and ensuring kōiwi on the foreshore are protected. Donald Couch is guiding the efforts on this.

Lyttelton West Development

Following on from the purchase of the first sections, we have recently confirmed our intention to purchase the remaining sections, subject to due diligence. We are also working closely with Ngāi tahu Property, Kāinga Ora and Te Puni Kokiri to secure funding and expertise to be able to undertake a feasibility study that will enable whānau to be aware of all the options, and work towards identifying the best ways to utilise the site.

Low Speed Upper Harbour Zone

Tangata tiaki have previously discussed with the harbour master the idea of limiting the upper harbour primarily or exclusively to non powered vessels and or to motorised vessels travelling at low speed. We are looking further into how this might work and will report back in due course.



ECAN Integrated Plan

This is a major multiyear piece of work that will incorporate the various plans ECan is responsible for including: coastal plan, air plan, land use plan and freshwater plan. It is important to engage in this process and we are working with Ecan and other Rūnanga

TRONT Rep and Alternate Appointments

As outlined in recent e-pānui, the Appointments Committee last month confirmed the reappointment of Gail Gordon as Te Rūnanga o Ngāi Tahu Representative, and the appointment of Rueben Radford as Alternate.

Thanks to all the candidates who put themselves forward and to Brett Lee for all his mahi as the Rūnanga Alternate Representative and as a Rūnanga Exec member. Thanks also to the Appointments Committee for all their mahi on this.

Governance Project Update

The involvement of Te Wharehukahuka is due to finish early 2023 however work will be ongoing in a number of areas as follows:

- Strategic plan review and strategic direction – while the strategic plan has at a high level set out clearly where we want to get to in terms of connecting with whānau and 'bringing them home', the next level of detail outlining the keep focus areas around how we will get there and how we measure our progress needs further work.
- Decision making framework and the respective roles and powers of Exec, Committees, the Rūnanga and staff
- Policy – work on governance level policies is ongoing. These cover a range of areas
- Alignment of staffing to Strategic Plan Pou (see below)

Personnel Update

As is evident from the Quarterly Report, in the areas of our mahi where we have staff in place to support and progress various Kaupapa under Strategic Plan Pou, we are able to make good progress, while the areas where there are gaps in staffing, some projects have stalled. Now we are now in a good financial position, we can do some longer term appointments and are looking at filling the gaps in our staffing structure to support initiatives under all Pou. In the short term (next 3 months) we are focused on creating roles to coordinate mahi under the Taiao and Tongarerewa Pou, as well as reappointing a Whānau Ora Navigator and will advertise these progressively over this period. It is anticipated each of these new roles There are plenty of other opportunities

Marae Costings

To ensure we better cover overall marae running costs and to help reduce the volume of bookings from roopu with no significant connection to Rāpaki charges will increased follows from the beginning of 2023:

- *Whānau/hapū bookings*: \$160 inc GST
- *Community Partner bookings*: (schools within the takiwā and other key schools and community groups we have/will have a significant ongoing relationship with): \$550 inc GST
- *Standard bookings*: (govt, corporate, non-partner schools and community groups): \$850 inc GST

Charitable Grants September Round

The Charitable Grants Committee have distributed 8 grants totalling \$16,000 in the financial year to date. Grants have been made for health and educational purposes. Thanks to the Committee for their efforts.

Capital Projects Update

Marae improvements: It's great to see the marae extension, laundry, kitchen venting, sound system and sound proofing work all but completed. It's taken longer than planned but I think everyone will agree the end result has been worth it.

School Restoration/Redevelopment: with resource consent secured, we are now working through the building consent process with CCC while we await (hopefully) decisions to secure the final funding for the project.

18a Redevelopment: while further input is needed on the building layout An updated concept plan is being developed but can be refined/changed as required. It is hoped the waharoa can also be completed at the same time as the upgrade.

Playground: Following presentation of the concept plan by Materia Hutana to the October Rūnanga, whānau are encouraged to consult with their tamariki and mokopuna around the design options (available by email or hard copy). Materia will present again to the December Rūnanga meeting.

Other projects: While we have fully or partially developed plans for other projects, they are all funding dependent.

Recent Events

Parihaka Commemorations

Nga mihinui ki a koutou; thank you to everyone who helped and came together for the local events at Rāpaki and in Lyttelton to remember the people of Parihaka.



Pioke Pursuit

A beautiful day greeted those who came to Te Rāpaki o te Rakiwhakaputa for the annual Pioke Pursuit at the end of October. After a mihi whakatau on the atea, all the whānau headed down to the carpark and set up to watch the races. Big mihi to Te Waka Pounamu and all our whānau and local kaihoe who helped make another great day.



Significant Upcoming Hui and Events

Te Ahu Pātiki Trust Conservation Park Launch Tuesday 22 November 6pm



December 2023 Rūnanga Hui Kai and Whanaungatanga Day

Following the final Rūnanga meeting on 10 December we will have kai, some activities for tamariki and the whānau. It would be great to have some whānau to step forward to help organise.

Rangatahi Noho 2023

Following on from our successful noho pre Covid we are restarting these. Each noho is an opportunity for 10 Ngāti Wheke rangatahi aged 12-16 to come together for 5 days of whakawhanungatanga, learning shared whakapapa, marae tikanga/karakia, rongoā, mahinga kai, maurakau, raranga, waka and pūrākau, and will include a stay on Ōtamahua. There will be 2-3 experienced supervisors at all times, including at least one wahine and one tāne, as well as some other specialist kaiako for some of the kaupapa. Please complete this expression of interest form asap if you are interested in participating. Contact the Office for more info.

Thank you for your support and participation.

Mishele Radford, Chair

THONW Inc Quarterly Report July-Sept 2022

This report summarises progress of initiatives against the Strategic Plan pou primarily covering the quarter to 30 September 2022 but includes activities up to the time the report is completed

Strategic Plan Pou (please note some of the bullet points are not in the strategic plan but have been added to capture additional activity)	Activities
<i>Oranga: Providing opportunities for all whānau members to live healthy lifestyles physically, mentally, emotionally, spiritually, and culturally.</i>	
<ul style="list-style-type: none"> • Rongoā practices nurtured 	Rongoā workshop delayed until new Whānau Ora Navigator in place.
<ul style="list-style-type: none"> • Physical activity programmes 	Rangatahi/whānau waka programme tbc Dojo operating in pilot phase– led by tangata tiaki – due to restart Summer 2023 Working in partnership with Lyttelton Recreation Centre on rangatahi initiatives
<ul style="list-style-type: none"> • Health clinics and information sessions at the marae for whānau and community 	Health clinic was planned for final quarter 2022
<ul style="list-style-type: none"> • Healthy kai policy 	Ongoing
<ul style="list-style-type: none"> • Individual whānau and community māra kai 	More than 20 whānau māra supported. Community māra further developed with some planting undertaken
<ul style="list-style-type: none"> • Health and safety practices 	Training and staff and portfolio planning to improve health and safety practices ongoing.
<ul style="list-style-type: none"> • Whānau Ora programme supporting whānau aspirations 	Support for whānau ongoing
<ul style="list-style-type: none"> • Other initiatives to support hauora 	Participation in process with other Rūnanga for development of a regional health hub Redevelopment of hauora strategy led by Hauora committee
<ul style="list-style-type: none"> • Covid 19 Response 	Support being provided to whānau through distribution of Covid packs Support for marae initiatives to minimise Covid transmission
<i>Ahi Kā: Affirming the place of Ngāti Wheke as mana whenua mana moana, and enabling whānau to thrive on our own whenua.</i>	

<ul style="list-style-type: none"> Partnering with the Naval Point Club, other local recreational users, and CCC on the redevelopment of Naval Point 	Contribution to development of hub facility concept and landscape design ongoing. Input being provided by tangata tiaki on possible development of breakwater at Te Nukutai o Tapoa to ensure changes improve tidal flow.
<ul style="list-style-type: none"> Co-hosting Sail GP 	Revised committee in place. Planning ongoing
<ul style="list-style-type: none"> Replace Ōtūherekio pou and continue installation of pou whenua around the takiwā 	Caine Tauwhare working on Ōtūherekio and Ōrongomai pou.
<ul style="list-style-type: none"> Support for whānau wanting to come and live at Rāpaki and in the takiwā through enabling succession to land, and supporting papakainga and employment initiatives 	<ul style="list-style-type: none"> Land succession project underway to enable whānau to succeed to Rāpaki lands. Community Clinic held 3 August and again in October. Ongoing support be provided. Lyttelton West development project progressing with first land blocks purchased, and purchase of remaining land in progress. Funding for feasibility being sought.
<ul style="list-style-type: none"> Working with local organisations such as Te Ūaka to ensure Ngāti Wheke values and interests are appropriately recognised 	Close working relationship with Te Ūaka continues with involvement in funding applications ongoing
<ul style="list-style-type: none"> Continue to work to ensure important whenua areas of interest are appropriately protected and recognised 	Plans developed for interpretation sites at various locations including 8 Norwich Quay, Ripapa and others. Working with a range of other external organisations to ensure appropriate recognition through signage and other means. Initiative to better protect Pūrau urupā and return land restarted with assistance from Te Rūnanga.
<ul style="list-style-type: none"> Develop strong working relationships with Crown partners, communities and other rūnanga to ensure Ngāti Wheke aspirations are respected 	Te Motu filming completed with significant hapū involvement. Film due to be released 2023.
<ul style="list-style-type: none"> Assess feasibility, develop and implement capital projects including: marae improvements, school building, papatakaro (playground), Office complex, waharoa, and other prioritised projects 	<p>Prioritisation of development projects completed. Updates:</p> <p>Marae improvements – project all but completed.</p> <p>School – resource consent obtained. Building consent applied for. Awaiting final funding which will hopefully be in place by the end of 2022 to enable commencement early 2023</p> <p>Papatākaro – last design iteration presented to Rūnanga in October. Next iteration due December.</p> <p>18A Upgrade – working on plans, consents and costings for upgrade to full commercial standard. Waharoa awaiting decisions around placement (ideally will be done in conjunction with 18A).</p>

	Planning underway for other projects including waka shed, playground, and flood mitigation. Urupā road awaiting funding. No clear funding source at this stage
Strengthening ability of organisation to achieve objectives through governance project	Governance project ongoing.
Support the regular gathering of kaumātua and other initiatives Kaumātua wish to undertake	Kahui Kaumātua meeting most months, now planned for 2 per month.
<i>Tongarerewa: Ensuring taonga, including cultural heritage and identity, be shared and actively practiced, thereby preserving it for future generations.</i>	
<ul style="list-style-type: none"> Working with whānau to develop resources and implement initiatives to ensure they have access to knowledge 	Whare interpretation resource being developed to provide whānau with clear information about whare whakairo, tukutuku, tāhuhu, heke, and other aspects
<ul style="list-style-type: none"> Ensure all whānau understand the basic tikanga and kawa of the marae 	No further work done on this to date
<ul style="list-style-type: none"> Support wānanga for whānau and hapū to develop deeper understandings 	Kaikaranga wānanga held Sept Te reo classes completed Kahui Kaumātua active Writing of school history underway Taonga Tuku Iho doco launching 20 November
<ul style="list-style-type: none"> Maintaining and enhancing cultural practices around mahi toi, mahinga kai etc 	Rangatahi noho funding confirmed – to be held end of Jan, April and October 2023.
<ul style="list-style-type: none"> Matariki, Parihaka, ANZAC and Waitangi Day events are held regularly 	Parihaka events held
<i>Taiao: Ensuring that the natural environment is maintained and enhanced, guided by our values of mahinga kai and Ki Uta Ki Tai</i>	
Partnering with local government and NGOs on a wide range of land and water restoration projects such as: Whaka Ora Healthy Harbour, Kaimahi for Nature, Te Ahu Pātiki, Te Kāhahu Kahukura, Avoca Valley Restoration, King George Reserve	Working with listed organisations/projects around Whakaraupō and elsewhere in the takiwā. Representation on range of entities including: Summit Road Protection Authority, Ōtamahua Restoration Trust, local reserve committees

Extension of mātaítai and public education programme around fishing	Mātaítai extension close to receiving ministerial approval. Public education to follow. As at 15 Nov we are still awaiting the Minister of Fisheries decision on the mātaítai extension.
Mussel Whata	No progress to report at this stage. We're still waiting for mussel spat lines
<p>Training whānau in diving and skippering to ensure plenty are available</p> <p>Skippers</p>	<p>Our diving team of Max and Michael Korako, Isaac Fahey, Renata Sadlier and Jordan Paulsen are working their way through to Advanced Open Water certification and Dive Rescue Certification. To date Renata has qualified in all categories, Isaac has achieved Advanced Dive Certification and Max; Michael and Jordan are awaiting confirmation of a date to undertake their Advanced Diver and Dive Rescue Courses.</p> <p>The final stage for the boys who qualify, is to proceed to Commercial Dive Certification.</p> <p>Currently we have three skippers qualified to a minimum of SRL Certification (Skipper Restricted Limits). It is our aim to train more of the boys up to SRL level, to future proof the operation and give Rāpaki an option should we wish to expand into other areas such as tourism, water transportation and aquaculture.</p>
Undaria Harvesting and Resowing of Native Kelp species Rāpaki Tangata Tiaki and Otago University	<p>Work begins the week commencing 20 November of the harvesting of undaria seaweed in Whakaraupō. The aim is to establish the quantity and quality of the invasive weed. Undaria is in big demand in the lucrative Japanese market, however the quality has to be high with a reliable source.</p> <p>Once the undaria has been harvested we'll be working with Otago University Researchers, financed by Sail-GP's Legacy program, "Live Oceans" to resow selected native kelp species in areas where undaria has been cleared. Research has been undertaken by Otago to identify native species that are more resistant to our warming ocean temperatures.</p>
Restoring the whenua and moana through habitat enhancement initiatives, and control of destructive practices through education, regulation and enforcement	

Wetlands Project	Plans being developed for fish passages at various locations, and for establishment of wetlands at 1A2B. This involves the creation of a series of ponds to assist in the control of and storage of water to supply water tanks to feed the nursery and support plantings along the upper areas of Omaru stream, where planting restoration work is being undertaken by Kaimahi for Nature.
Kaimahi for Nature	<p>The program is going well and we have achieved a lot in the 12 months to date, since the start mid-September 2021. Good progress has been made on our three primary sites, being Living Springs, Rāpaki 1A2B and Taukahara 1. Work has been 70% completed on the 7 supplementary sites around the harbour although ongoing weed control maintenance is required on some of the properties. We have negotiated access onto an 8th property, once a part of the Taukahara block and sold-off by the Maori Trustee into private ownership. The property borders Taukahara and the Sugarloaf Reserve and provides a good outcome for the owner and this program that we have the opportunity to create a continuous green corridor from Living Springs through to Rāpaki that will be monitored for animal and plant pests and receive assistance with plants and planting. Council has been included in the conversation and are keen to support the project through plant and track maintenance.</p> <p>There have been plenty of hurdles to jump, however we're ahead of our milestones and making excellent progress. However, there's never enough time or resources, and this coming year, whilst the work on the whenua continues, it's all about building a sustainable succession plan that will ensure the work continues when the program ends in March 2024.</p>
Rapaki Nursery and Seedbank	<p>The nursey footprint has been developed behind the woolshed, including the drive-on access.</p> <p>The next stage is the development of the nursery itself including a building to house the equipment, staff area, potting and storage area. The development of a plant hardening off area, water-tanks to hold a minimum of 100,000 litres and irrigation systems including solar pumps, power supply and toilets.</p>

<p>Christchurch Botanical Gardens Seed Bank</p>	<p>Plans underway for establishment of seed banks in Rāpaki and Living Springs in conjunction and with the assistance of Christchurch Botanical Gardens. This is an effort to protect the purity of our local stock, propagate in our nurseries and eventually distribute to all of the restoration projects within the Whakaraupō wider catchment.</p>
<p>Biosecurity New Zealand Hui</p>	<p>A memorandum of understanding is being developed between Rapaki and the Botanical Gardens for the landowners and trustees' consideration.</p>
<p>MPI – Fishing regulations and controls</p>	<p>Informal meeting has taken place between middle and senior management of Biosecurity NZ and Rāpaki Tangata Tiaki representatives. We are requesting a kanohi te ki kanohi (face to face) with the top management decision makers, Ngāi Tahu and Rāpaki Tangata Tiaki. Our intention is to demand that regulatory change at a Regional and local Council Level is implemented to prohibit the movement of marine vessels from one area to another without the necessary paperwork to prove the vessel has been defouled of any invasive organisms such as Mediterranean Fanworm, undaria seaweed as two major examples. We are also seeking the implementation of “Marine Pathways” that will prohibit the movement of any vessel through the pathway without the necessary paperwork being in order. Vessels will be required to comply with the regulations or face a heavy fine, seizure and or removal of the vessel. Last but not least, it is our belief the regulating authorities have to provide the enforcement agency with the tools and teeth to apply and enforce the by-laws.</p>
<p>longairo Project</p>	<p>Work is underway to address what seems to be the ineffective policing of our fishing regulations within our Whakaraupō Mātaitai and our takiwā in general. It's our intention to join with other Runanga from Kaikoura to Onuku to have our concerns raised and addressed at a high level. The work will progress once the meeting date with Biosecurity NZ has been set.</p> <p><i>longairo</i> is a Te Pātaka o Rakaihautu Seafloor Mapping Project we are participating in in partnership with local rūnanga, ECan and Otago University to develop a detailed map of the seafloor that will yield much useful information. The mapping work will be undertaken by Otago University Researchers.</p>

	<p>Whakaraupō was left off the survey, however it is now included. Rāpaki Tangata Tiaki have been instrumental, acting as the conduit between Otago Uni, NIWA, ECAN, Lyttelton Port Company and Frontiers Abroad/Canty University, to obtain agreements from each organisation to share the mapping information already available, that's been undertaken by each entity for Otago to collate. Otago can fill the gaps, thereby speeding-up the process and avoiding additional time and costs. We're hopeful the relationships formed between these organisations will enable future collaborations and the sharing of information, should the need arise for the betterment of the harbour catchment. Mapping work has been planned and the first stage will take place over the summer of 22/23. Some of the information developed through the project will be publicly shared while other parts will be kept secure for approved access only.</p>
Frontiers Abroad and other collaborations	<p>We have formed an excellent relationship with the USA science undergraduate program Frontiers Abroad. The program is run in conjunction with Canterbury and Auckland Universities. Frontiers will be undertaking study programs within our rohe and Whakaraupō Catchment, including intertidal studies and surveys, sedimentation monitoring, forest health monitoring using lidar technology, the integration of mātauranga and Western Science, Lizard Monitoring, Mauri Modelling Omaru Stream, formation of a Science Hub in Rapaki and more.</p>
Improve our own marae practices to minimise waste through the Parakore programme	Parakore programme commenced
ECan Integrated Plan Project	Discussion commenced around how to be involved
Inputting on Resource Consents	Ongoing in conjunction with Mahaanui Kurataiao Ltd on wide range of applications.
<i>Kōrero Rangatira: Communicating in a mana-enhancing and inclusive way to ensure everyone is informed, and feels safe sharing</i>	
<ul style="list-style-type: none"> • Completion of our website and continued improvement of communication channels 	Website due to launch 20 November.

<ul style="list-style-type: none"> Continue to grow a culture where the voices of all are heard and respected 	Planning underway for development of communication strategy
<i>Pākihi Actively supporting whānau and hapū businesses, and employment opportunities that will enhance wellbeing</i>	
<ul style="list-style-type: none"> Providing whānau members with assistance in business through development of plans, accessing funding, brokering relationships 	Support provided through Whānau Ora service to various whānau members
<ul style="list-style-type: none"> Implementing cadetships, mentoring, and internship programmes 	Summer cadetships commencing November 2022.
<ul style="list-style-type: none"> Develop hapū business opportunities (tourism, nursery) 	Work continuing on obtaining regulatory approval for commercial use of waka. DOC Tourism concession completed and submitted. Nursery construction at 1A2B underway
<i>Mātauranga: Supporting and assisting whānau in on their learning pathway, and providing guidance to local education</i>	
Current activities include:	
Assisting whānau and other Māori in the takiwā to develop and negotiate their educational pathways	Whānau Education Action Plan (WEAP) programme <ul style="list-style-type: none"> 8 new whānau plans completed, 5 in progress. Delivery has been slow due to some of our kaimahi have left the team to take up fulltime employment or due to illness cannot continue.
Resource Development	Work underway to improve existing resources Digital App, Te Kete Ako o Rākaihautū VR initiative developed and workshops planned for Rangatahi Resource creation for whanau, community and schools including Putaiao, Hangarau commenced
Support the education sector in the takiwā	
<ul style="list-style-type: none"> Establish and cultivate relationships with education providers connected to Ngāti Wheke, and within the Ngāti Wheke takiwā 	Ongoing engagement with local schools to support ākongā Māori. This is supported with personal visits from an Educational Committee rep, staff and kaumātua
<ul style="list-style-type: none"> Encourage and support local school marae visits 	Repeat bookings from schools who have experienced marae visits

<ul style="list-style-type: none"> Support culturally responsive teaching professional development programmes by mandated Ngāi Tahu /Māori entities for educators. 	<p>Ka pou pou reo training programme for kaiako SELO training for pre-school teachers</p>
<p>Support and co-ordinate marae-based programs that support lifelong learning for all ages.</p>	<p>Marae based evening te reo classes for whānau were popular, with high demand for more of the same.</p>
<ul style="list-style-type: none"> Create resources to support Ngāti Wheke learners on different education pathways 	<p>Our relationship/partnership with Bush Farm is strengthening, with more iwi involvement and support EP Te Reo online programme continues to have more whānau signing up</p>
<ul style="list-style-type: none"> Support other portfolios to create educational resources for hui and wānanga 	<p>TBC</p>
<ul style="list-style-type: none"> Guide whānau towards learning support and pastoral care services available to help with their education journey 	<p>We can provide the connections or links to many support services available through Ngāi Tahu and the community</p>
<p>Promote and celebrate Mātauranga Māori</p>	
<ul style="list-style-type: none"> Work with the Cultural Heritage and Identity portfolio to create learning opportunities for whānau 	<p>Ongoing</p>
<ul style="list-style-type: none"> Investigate ways to integrate Mātauranga Māori into all education opportunities 	<ul style="list-style-type: none"> Establish connections with Alternative Education Providers Kaumātua are volunteering to spend time at schools and Bush Farm interacting with the tamariki and just being a presence.

Te Runanga o Ngai Tahu Representative Report

NOVEMBER 2022

The past month has been extremely challenging and sad for many of our whanau and hapu who have lost loved ones during this time. I wish to acknowledge those who have passed and offer my sincere condolences to their whanau.

Henare (Nare / Bob) Tai - Husband of Marie (Ri) Tait - 17th October. Russell Hawkings – Husband of Aunty Omaha – 22nd October. Dr Terry Ryan – 27th October. Miriama (Mihi) Sinclair – Wife of Ashley Warnes – 27th October. Florence Tikao – Wife of Eddie Tikao – 30th October. Eleanor Kiri McCleave – Moko of Uncle Dudley, Daughter of Anne Couch – 2nd November (In Perth Aust).

Kia u ki te whakapono Kia aroha te tahi ki te tahi

Hold Strong to your beliefs and love one another

November also brings us to Annual General Meeting time for Ngai Tahu, these AGM hui and the TRONT hui will take place in Christchurch office on Friday 25th before we all move on down to Arowhenua, where finally after a couple of years of Covid, we are able to come together again at Hui-a-Iwi over the weekend of 26th & 27th November. The Te Runanga o Ngai Tahu Group Annual Report is out now, I am sure you will find it an interesting read about what is happening within the Iwi at present, with updates regarding Climate Change, Te Kiri Takapini, and other interesting stuff included.

Ngai Tahu holdings have had a successful year with a net year end profit of \$233 Million, heading back up to the pre Covid returns. Approx \$70Million has been distributed to the office to fund programs, which includes the expensive and on-going mahi required to ensure that Ngai Tahu rights and interested are upheld and that we hold government, both national and local to account. This amount also includes the Putea Whakamahi paid to each Papatipu Runanga.

Our Tront Hui this month has several decision papers being Capital Allocation, \$96.5Million in relativity money will be received from government soon, it has been agreed that this amount will not go to Holdings, our options include moving this amount into NTRIF or share between NTRIF and Whai Rawa. There is also another \$22Million in underspend for the year and we will look at distributing this as a \$1.25Million putea to Papatipu Runanga. Other decision papers include a Crown Engagement template, to education new government members on how to engage with us, their treaty partners and another to support an Iwi Katoa group to oversee Wai2552 rights in regard to trade agreements with other countries.

HUI-A-IWI 2022 26th & 27th November – Arowhenua Marae, don't forget your re-usable kai implements!

Mo Tatou, a, mo ka uri a muri ake nei – for us and our children after us.

Please contact me if you have any questions or would like to speak about any matters regarding Ngai Tahu. My email address is gail.gordon@ngaitahu.iwi.nz

Te Hapū o Ngāti Wheke Incorporated

FINANCE REPORT

For the four months ended 31 October 2022

For the financial year ending 30 June 2023

INTRODUCTION

We are now reporting the fourth month of the financial year, using a more user-friendly layout. We look forward to your feedback and further suggested improvements.

Please refer to the financial summaries included in this report for the four months ended 31 October 2022. All received supplier bills have been recorded, however because of when this report is produced, there may be several supplier bills and invoices still to be recorded. They do however give a good indication of the financial performance and position of the Rūnanga, as July through to September has been finalised.

OPERATING INCOME

Pūtea Whakamahi funding is available from Te Poho o Tamatea Ltd (TPoT) to support the day-to-day operating expenses. The Service Level agreement provides funding up to \$612,000, for the year ending 30 June 2023. This funding is the biggest source of income and can be drawn down in monthly instalments. Any funds not drawn down are held by TPoT for distribution to the Rūnanga as required. Any income received in advance, for example, deposits paid for marae hire have been journalled to income received in advance.

Marae income and expenses are consistent with the previous three months of trading, in that it is typically running at a loss.

All other income is in line with prior months of the current financial year, except for:

- Te Poho o Tamatea Ltd charitable grant income of \$13,446
- \$30,000 has been received from NZ Lottery towards 2023 operating expenses.

OPERATING EXPENSES

All other expenses are in line with prior months, except for:

- Te Poho o Tamatea charitable grant expenses for \$13,446 paid.
- Year end accruals recorded for June 2022 have now been reversed. These include provision for meeting fees and leave accruals for staff leave liability.

OPERATING EXPENSES (Cont.)

	INCOME & EXPENDITURE												
	Jul-22	Aug-22	Sep-22	Oct-22	Nov-22	Dec-22	Jan-23	Feb-23	Mar-23	Apr-23	May-23	Jun-23	Year to date
OPERATING CASH INCOME & EXPENSES													
Income													
Charitable grants	0	0	0	13,446									13,446
Church Income	0	0	0	0									0
External operating funding	3,028	2,999	2,164	32,284									40,474
Marae Income	-261	14,030	15,763	12,358									41,890
Other (interest, koha)	1,066	1,854	2,722	1,321									6,963
Pūtea whakamahi	51,000	51,000	51,000	51,000									204,000
Total Income	54,833	69,883	71,648	110,409	0	0	0	0	0	0	0	0	306,773
Less operating expenses													
Administration & Office	11,242	17,280	8,685	9,528									46,735
Charitable donations paid	0	0	0	13,446									13,446
Church	192	190	195	193									770
Executive committee / honorarium	-12,650	0	0	0									-12,650
Koha	104	500	0	626									1,230
Marae	11,355	21,466	15,897	14,217									62,935
Personnel & Staff	-22,483	20,655	13,988	13,507									25,667
Reserve Maintenance	1,072	1,000	2,161	843									5,075
Reserve trustees	0	0	120	0									120
Travel / Motor vehicle	289	0	330	790									1,409
Total Operating Expenses	-10,880	61,091	41,377	53,150	0	0	0	0	0	0	0	0	143,328
Net Profit/(Loss)	65,713	8,792	30,272	57,259	0	0	0	0	0	0	0	0	163,445
NON CASH OPERATING EXPENSES													
Depreciation	15,869	15,869	15,869	15,869									63,478
Total NON CASH	15,869	15,869	15,869	15,869	0	0	0	0	0	0	0	0	63,478
TOTAL OPERATING PROFIT/LOSS	49,844	-7,077	14,402	41,389	0	0	0	0	0	0	0	0	99,968

OPERATING PERFORMANCE EXCLUDING PROJECTS (Profit/Loss)

The above operating income and expenses show an overall operating profit of \$41,389 for the month ending 31 October 2022. All known operating bills have been received, and all marae hire, and accommodation for September have been invoiced. The summary below includes the prior month's finalised profit/loss, and the YTD totals.

Summary	31-Oct-22	30-Sep-22	Year to date
Cash operating profit/(loss)	57,259	30,272	163,445
Depreciation	15,869	15,869	63,478
Operating profit/(loss)	41,389	14,402	99,968

POU

As part of the governance review all projects and programmes (excluding Office and Marae general operating accounts as shown on page 2 of this report) have been aligned with the strategic plan pou and are reported against in these monthly reports (as shown on page 6 and 7 of this report) and in the quarterly narrative reports to Rūnanga (in November, Feb, May, and August each year).

Individual tailored reports can be designed for different committees based on their needs. Please liaise with Penny Mercer (penny.mercer@ngaitahu.iwi.nz).

Further feedback would be appreciated on the sorts of financial information whānau would like to see.

FINANCIAL POSITION

Funds held in the bank as of 31 October 2022 were \$394,328 (Sep 2022: \$417,828). These funds include externally funded project monies received to date. Most assets of the Rūnanga are land and building. There were no significant asset purchases for the month ending October 2022.

The accounts receivable balance is mainly made up of outstanding invoices between current and 60 days outstanding, of which \$204,000 is funds held by Te Poho o Tamatea Ltd. Accounts receivable is frequently monitored and followed internally by the office.

Assets	31 Oct 2022
Bank	394,328
Current Assets	
Accounts Receivable	453,480
Business Credit cards	206
Inland Revenue	32,924
Prepayments	55,683
Term Deposits	900,000
<u>Total Current Assets</u>	<u>1,442,292</u>
Fixed Assets	6,496,069
Total Assets	8,332,689
Liabilities	
Current Liabilities	
Accounts Payable	198,755
Business Credit cards	0
Accrued Expenses	2,700
Income in advance & Unspent Grants	1,782
Ngāi Tahu Property Limited – Loan	155,169
Total Liabilities	358,407
Net Assets	7,974,283
Equity	
Accumulated Funds	6,681,788
Current Year Earnings	1,292,495
<u>Total Equity</u>	<u>7,974,283</u>

CASH FLOW POSITION

The cash position is a positive of \$251,493. This is broken down as follows:

		31 Oct 22	30 Sep 22
Cash	Bank	394,328	417,828
	Term Deposits	900,000	900,000
Owed to THoNW	Accounts Receivable	453,685	389,758
	Prepayments	55,683	58,885
Owed by THoNW	Accounts payable	-198,755	-213,304
	Provisions	-1,782	-1,652
	Inland Revenue	-2,700	-2,700
	Ngāi Tahu Property Limited - Loan	-155,169	-155,169
	Pou	-1,193,796	-1,217,163
	Net Cashflow Profit/(Loss)	251,493	220,167

Strategic Plan Pou management

The following are a list of Pou managed internally within the office with support from whānau. For the month ended 31 October 2022

Account	Budget	Income	Expense	Balance
POU				
Oranga Pou				
Covid 19 Response	10,000	16,700	0	16,700
Hauora Clinics and Wānanga	5,000			0
Health Location Project	25,000			0
Health Strategy Implementation	5,000	5,000	0	5,000
Physical activity programmes	25,000	0	0	0
Rongoā initiatives	3,000	3,682	0	3,682
Whānau and Community Māra	70,000	91,552	42,122	49,430
Whānau Ora Delivery (including whānau grants)	90,000	135,455	34,560	100,894
Total Oranga Pou	233,000	252,389	76,683	175,707
Ahi Kā Pou				
ANZAC WWII Memorial	5,000			0
Fibre Installation	100,000	40,000	0	40,000
Governance, training & development	15,000	15,234	0	15,234
Lyttelton Museum	0	0	450	-450
Lyttelton West Development	155,169	155,169	155,169	0
CAPITAL PROJECTS				
18A Upgrade	25,000	0	6,480	-6,480
Marae Flood Mitigation	100,000			0
Marae Improvement	480,000	387,435	296,129	91,306
Playground Redesign	5,000	0	2,500	-2,500
School Restoration / Redevelopment	390,000		14,844	-14,844
Naval Point Redevelopment	10,000	6,885	0	6,885
Papatipu Runanga CCC Engagement Project	120,000	120,000	0	120,000
Sail GP	203,700	10,700	3,519	7,181
Small capital items	17,293	17,293	0	17,293
Stand tu maia	14,611	20,236	545	19,691
Support for kaumatua initiatives	5,000	0	916	-916
Supporting whanau papakainga development	57,500	55,656	28,653	27,003
Waharoa	50,000	51,000	0	51,000
Waka Rangatahi Engagement	20,000	14,000	70	13,930
Total Ahi Kā Pou	1,773,273	893,607	509,275	384,332
Tongarerewa Pou				
Cultural events	20,000	4,348	0	4,348
Cultural monitoring	5,000	0	1,660	-1,660
Interpretation Panels	10,000	10,000	0	10,000
Karanga Workshops	0	0	3,546	-3,546
Ōtūherekio Pou	30,000	4,250	0	4,250
Rangatahi noho	15,000	30,491	0	30,491
Reo Wānanga and Resources	15,000	1,661	258	1,403
Resource Development	20,000			0
School History	10,000	12,000	0	12,000
Tamariki programmes	2,000	1,400	0	1,400
Taonga Tuturu Documentary	10,000	12,617	9,306	3,311

Te Atakura for Hui a Iwi	5,000	4,348	1,252	3,096
Tikanga, kawa, and Wheketanga wānanga	20,000	0	0	0
Total Tongarerewa Pou	162,000	81,114	16,021	65,093
Taiao Pou				
Diving and boat skipper training	10,000	0	0	0
Fish Passage	10,000	5,000	0	5,000
Head of the Harbour Whenua Habitat re-enhancement initiatives	35,000	34,230	7,689	26,540
Kaimahi for Nature	1,200,000	591,199	453,016	138,182
Kaiwaka 1	0	14,069	11,010	3,059
Marine Habitat re-enhancement initiatives	100,000	122,165	0	122,165
Manawhenua Advisory Group	0	1,000	1,000	0
Natural Resources Coordination	0	300	0	300
Native Plant Nursery Development	35,000	0	0	0
Native Plant Nursery Operation	30,000	36,752	20,126	16,626
Omaru Stream Wetland	10,000	10,000	0	10,000
Parakore Programme Implementation	3,000			0
Seedbank Establishment	20,000	0	0	0
Takutai Moana Research Project	25,000	25,000	0	25,000
Whakaraupō mātaihai extension and public education	5,000	0	0	0
Total Taiao	1,483,000	839,715	492,842	346,873
Kōrero Rangatira Pou				
Website Development and Maintenance	15,000	0	9,456	-9,456
Communication Strategy	5,000	0	0	0
Total Kōrero Rangatira Pou	20,000	0	9,456	-9,456
Pākihi Pou				
Summer Cadetship Programme	20,000	20,000	0	20,000
People of the Pā	60,000	50,000	50,000	0
Piiki Film	0	13,300	8,080	5,220
Waka Commercial Operating License	10,000	0	0	0
Total Pākihi Pou	90,000	83,300	58,080	25,220
Mātauranga Pou				
Whānau Education Plan Delivery and Support	120,000	236,267	50,240	186,028
Education Perfect Te Reo Programme	15,000	20,000	0	20,000
Ka pou pou reo kaiako training for teachers and preschool teachers	20,000	0	0	0
Tamatea Digital App Upgrade	8,000	0	0	0
Te Kete Ako o Rakaihautu Book Rewrite	20,000	0	0	0
Development and delivery of tech micro-credentials inc drone and VR	10,000	0	0	0
Resource Creation for whānau, community school (online and paper)	20,000	0	0	0
Mātauranga māori wānanga online and f2f	20,000	0	0	0
Total Mātauranga Pou	233,000	256,267	50,240	206,028
Total POU	3,994,273	2,406,393	1,212,597	1,193,796

Te Hapū o Ngāti Wheke Inc Rūnanga Meeting Minutes 09 October 2022

Present: Herewini Banks, Elaine Dell, Gail Gordon, Huia Guthrie, Paula Hutana, Wene Hepi, Mariata, Mishele Radford, Māui Stuart, Karen Timihou, Lynne Veal, David Banks, Roy Tikao, Donald Couch, Matera Hutana, Rewi Couch, Sophie Couch, Nuk Korako

Karakia: Māui Stuart

Apologies: Brett Lee, Jimmy McGregor, Dorothy Couch, Yvette Couch-Lewis, Kāhu Philips

Ngā Mate: NIL

Chair Report

The report was taken as read

Lyttelton West Development

- Purchase of the remaining section of property will go ahead. Funded by TRONT Regional Development fund (grant 50%, long term interest free loan 25%) and Te Poho o Tamatea Ltd donation (25%).
- The next phase is looking at what we want to do with the site. Suggestion of social housing, shared equity housing, and the health and wellbeing hub as discussed previously.
- It was confirmed a comprehensive site feasibility study was undertaken by TRONT as part of the site investigation process, including Geotech reports.
- There was discussion on prioritizing existing projects, including the Kaumātua flats. The Chair expressed this is pending legal action. Until the matter is resolved, THoNW are unable to prioritize funding.
- It was confirmed the TRONT regional development fund can be used for other THoNW projects, of up to \$5million (less purchase of Lyttelton West development).

Governance Project

The chair spoke to the report and the following was noted:

- Clarification on Governance training. The executive undertook an operational evaluation survey which highlighted our strengths and weakness.
- Areas identified for review were noted:
 - strengthen our governance structure and practices.
 - revision of the THoNW constitution revision i.e. removal of treasurer and secretary roles.
 - some committees are over committed and under resourced. I.e., the naming committee dealing with many requests for Māori place names.
- The tikanga, waiata and te reo whānau resources remain outstanding tasks. Concern raised that we are not fulfilling our aspirations to provide these essential resources.
- More administrative roles are required in the office.
- Discussed alternating monthly wānanga and rūnanga meetings.
- Clarified “contractors” is in reference to whānau contractors, not external.
- All recommendations are aligned to the THoNW constitution, and the strategic plan. A revision of the strategic plan would clarify our aspirations and outcomes.

Andrea Dahl – NZ Stats

- Census day is 7 March 2023. Whānau are encouraged to complete the survey. The information collected provides data that informs the government where to allocate funding. The priority groups are: ethnic, elderly, rainbow community, youth, Pacifica and

Māori.

- Stats NZ have reverted to online and physical forms. The form can be completed up to 2-3 weeks prior to 7 March if it is likely no one in the household are unable to complete the form on the night.
- Stats NZ will fund marae to hold initiatives to encourage and assist whānau to complete the census forms.
- It was suggested that NZ stats approach Kura Kaupapa, i.e. Te Pa Rakaihautu where there is better whānau engagement.
- Lynn Couch has been appointed the Senior Census collector
- Noted that iwi are unable to access each other's statistics, which makes it difficult to compare data.

ACTION: Andrea to investigate and respond to Donald Couch.

TRoNT Rep Report

- Taken as read
- Congratulations to Nuk Koroko and Iaeen Cranwell on their appointments as the Ngāi Tahu Representatives on the ECan Council.

MOVED to congratulate Nuk Korako, acknowledge Yvette Couch Lewis for time served at ECan and congratulate Luana Swindells on her appointment onto the Banks Peninsula Committee Board.

MOVED the Chairman Report and the TRoNT Rep reports be accepted.
Lynn/ Herewini – CARRIED

Financial Report

MOVED that the Finance report be received. Herewini/Dave - CARRIED

Pukutākaro Developments - Matera Hutana

- As part of the Internship program, Matera was tasked to draft options for the new pukutākaro (playground).
- Four designs were presented, each representing Te Wheke stories, events that have shaped us and fun stuff. These plans are available at the office.
- The costs to build these options range from \$500-\$700k. To reduce costs, whānau can help in some areas i.e. painting, landscaping.
- Health and safety considerations are factored in, including laying boulders in the creek, which still allows natural flow, entry and exit, speed bumps (traffic management) and fencing.
- Suggested a disabled carpark and play equipment accessible for all ages and disabilities.
- Whānau were asked to review the options and decide on which plan is the preferred.

Confirmation of August 2022 Rūnanga Minutes

- Kaumātua Kahui: Ongoing, however \$20k budget suggested to rūnanga kaumātua rūnanga was suggested.
- Naval Point Development and Breakwater: Rewi attended hui online. Removal of the break water issue is still ongoing. Removing the break water will have a significant impact on the mātaītai reserve.
- Urupā access: ongoing funding issues to construct the driveway. Marae development fund does not cover this work.
- Trustees Hui: Rewi wanted to raise awareness of an existing plan. The plan is for 368 burial plots, divided into four sections representing whānau pou. The office holds these plans for whānau to access.

- Feedback from the Trustees for the driveway development and new urupā plan will be raised.
- Kaumātua flats – commenced legal action against Te Mahi Korowai.

MOVED that the minutes of the meeting held 14 August minutes be accepted as a true and correct record. Herewini/ Māui - CARRIED

General Business

- **Parahika Commemoration events:** 29 October - a movie event will be held at Northlands Hoyts. A request to bring the movie to Lyttleton has been accepted, Māui to provide update. 5 November, a service whakatau will be held at the Marae, followed a service by the monument, then to Lyttelton rose gardens where another commemoration will be held.
- Mauri suggested a letter from the rūnanga to invite other churches and community members who have expressed interest to commemorate Parihaka.
Agreed: to cover costs for morning tea.
- The kahui kaumātua have been approached to comment on the connection of Parihaka to Rāpaki. A book is being written about the event.
- **SailGP:** Traffic in and out of Lyttleton (except for residents with permits) will be closed off during sail events for up to 4 hours at a time on race days, except for residents with permits.
- Traffic management plans to be for pōwhiri to be advised.
- Huia acknowledged herself, Margaret Fahey, Māui Stuart and Issac Fahey for holding the ahikaa by welcoming and supporting visitors onto the Marae.
- The Wharekai extension is now complete. It was agreed to approach the Kaumātua kāhui regarding naming the Wharekai.
- Dining room acoustics will be investigated to resolve the issue of echoing.
- New speakers are now installed in the Wharekai and Wharenuī.
- Three security cameras are installed – coverage includes kitchen, pounamu taonga and facing at the front of the marae. Another camera will be installed at the office. The cameras are only operation afterhours.
- A security sensor light was suggested to be installed where the diesel tanks are located.
- Acknowledgment for Nuk Korako who accomplished another bike fundraiser for Renee. The whānau will acknowledge Nuk at a later date.

Karakia whakamutanga: Māui Stuart

The meeting closed at 12.47pm